

**REDHAWK**  
**STRETCH BOLT-ON KIT**  
**Part# RH080RXVBOE**  
**Electric - E-Z-GO - RXV**  
**INSTALLATION INSTRUCTIONS**



TITLE:		
<b>RH080RXVBOE INSTALLATION INSTRUCTIONS</b>		
DRAWN BY:	DATE:	DWG NO.
R. HAERER	FEB 02, 2017	<b># 7669</b>
SHEET:	SCALE:	
1 of 11	Not To Scale	



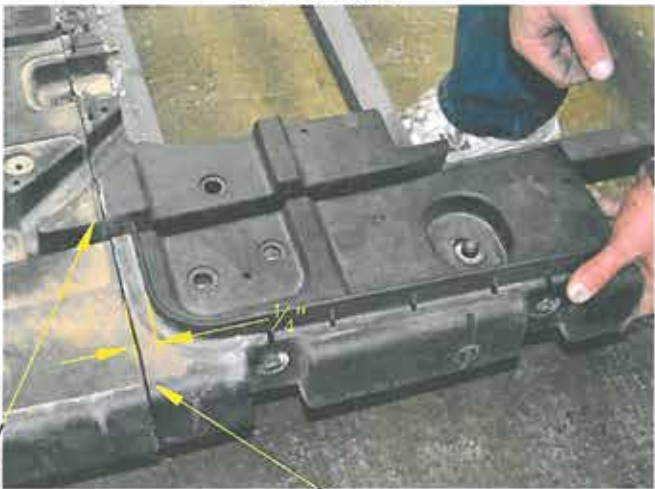
Save all factory bolts for later use.  
Lubricate stainless steel fasteners.

**STEP 1:**

Remove the top from the car, and front & rear top supports.  
Remove the seat bottom and seat back basket assembly.  
Disconnect the batteries and charger plug in.  
Disconnect Run/Tow switch from body.

*Note- car will not roll with batteries disconnected.*

Drivers Side



Remove side trim pieces from the car.  
Remove the rear body from the car.  
Remove the batteries from the car.  
Remove the metal bracket that ties plastic floor sides together in front of the battery box.

**STEP 2:**

Pull the floor mat back, remove if preferred.  
Remove the brake/accelerator cover.  
Disconnect all wire harness connections at the back of the car including two connections from the controller to the motor.  
Locate yellow, blue and green wires on the controller, label and disconnect from controller.  
Be sure to label all connectors for re-assembly.  
Move the controller and wire harness to the front of the car.  
Remove battery tub.

Rib stays w/front of car.



**STEP 3:**

**\*\*\* Cutting the floor \*\*\***

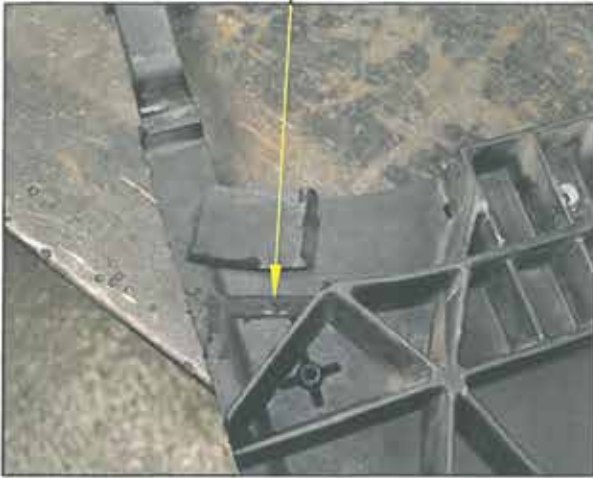
Mark a cutting line  $\frac{1}{4}$ " as shown.  
Remove the four (4) bolts and pry up the floor a few inches so that the chassis is not damaged.  
Carefully cut the two rear pieces with a Saws All from the floor.

Cut tabs on two rear pieces (as shown) short of battery tub connections.



TITLE:		
<b>RH080RXVBOE INSTALLATION INSTRUCTIONS</b>		
DRAWN BY: R. HAERER	DATE: FEB 02, 2017	DWG NO.
SHEET: 2 of 11	SCALE: Not To Scale	<b># 7669</b>

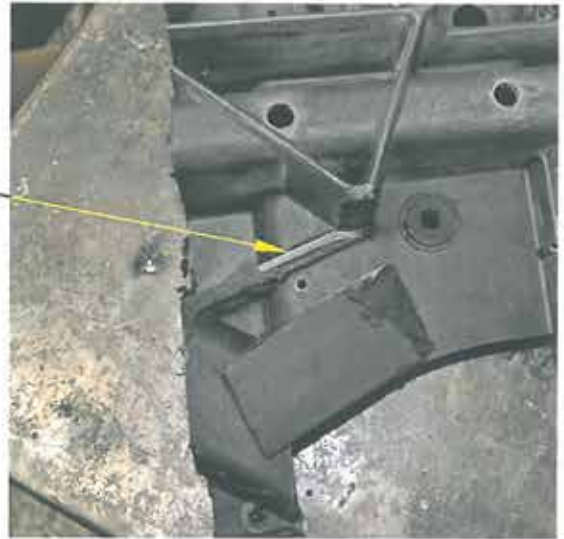
CUT



**STEP 4:**

Trim rib from under side of left and right floor pieces as shown.

CUT



**STEP 5:**

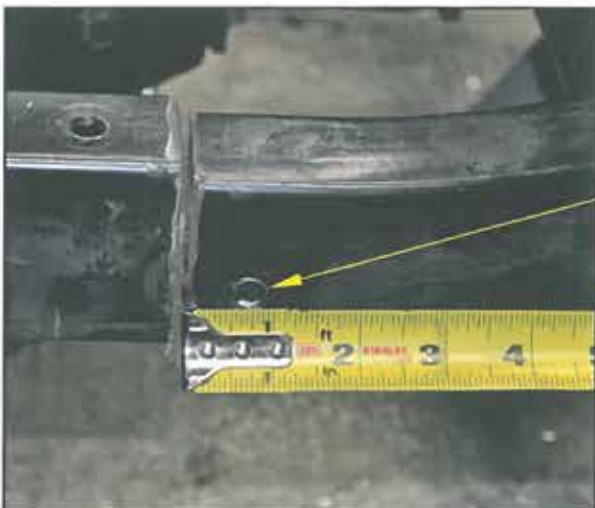
\*\*\* Cutting the car in half \*\*\*

Support the motor and frame with jack stands.

- Measure forward 5" from the front edge of body support angle & mark both sides of tube frame.
- Be sure that the mark is square with the chassis.
- Cut the 1" x 2" frame of the car on both sides with a Saws All.

The car will now be in two pieces.

After the car has been cut in half, grind both sides of the cut, making it smooth.



**STEP 6:**

Front half of frame. Measure back  $\frac{3}{4}$ ", centered vertically and drill a  $\frac{3}{8}$ " hole at location "A" (both sides).

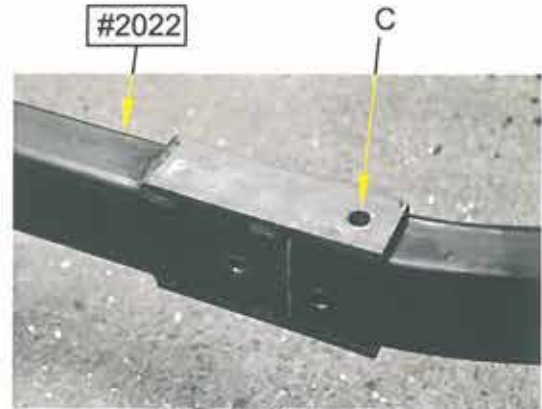
TITLE:		
<b>RH080RXVBOE INSTALLATION INSTRUCTIONS</b>		
DRAWN BY: R. HAERER	DATE: FEB 02, 2017	DWG NO.
SHEET: 3 of 11	SCALE: Not To Scale	<b># 7669</b>





**STEP 7:**

Rear half of frame. Measure back 1", center and drill a  $\frac{3}{8}$ " hole through the top of the frame at location "B" (both sides).



Front of frame.

Tab slides into rear frame.



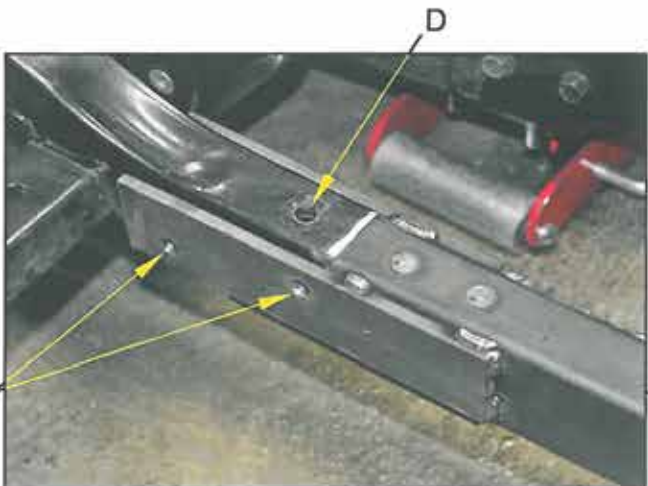
#2022

**STEP 8:**

Press frame extension (PART #2022) snug and in line with the front frame. Drill  $\frac{3}{8}$ " hole at location "C" through frame (both sides). Assemble with two (2)  $\frac{3}{8}$ "x4" grade 8 hex head bolts and four (4)  $\frac{3}{8}$ " flat washers and two (2)  $\frac{3}{8}$ " locknuts. Do not tighten.

Press frame extension (PART #2022) into with the rear frame. The top tab slides into the rear frame. Assemble at location "D" with two (2)  $\frac{3}{8}$ "x4" grade 8 hex head bolts and four (4)  $\frac{3}{8}$ " flat washers and two (2)  $\frac{3}{8}$ " locknuts. Do not tighten.

Drill  $\frac{3}{8}$ " holes at location "E" through frame (both sides). Assemble with four (4)  $\frac{3}{8}$ "x2 $\frac{3}{4}$ " grade 8 hex head bolts and eight (8)  $\frac{3}{8}$ " flat washers and four (4)  $\frac{3}{8}$ " locknuts. Do not tighten.



#2022

TITLE:		
<b>RH080RXVBOE INSTALLATION INSTRUCTIONS</b>		
DRAWN BY: R. HAERER	DATE: FEB 02, 2017	DWG NO. # 7669
SHEET: 4 of 11	SCALE: Not To Scale	



**STEP 9:**

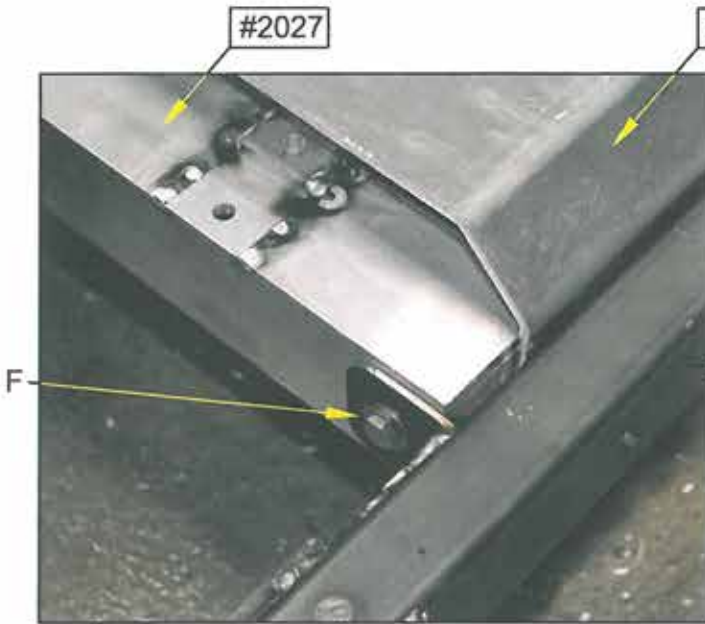
Lengthen the wire harness . Remove any wires from the OEM harness that run to the charger plug and re-route around the battery box. The remaining wires will be cut and lengthened using the 35" wires and butt connectors supplied with the kit (PART #2555). Stretch wire harness out straight. Find the straight section between any front & rear factory pigtails cut & insert new harness in this area.

**NOTE! DO NOT CUT ALL WIRES AT ONCE!**

Wires of the same color should be extended one at a time to prevent crossing.

Stager the cuts over the middle length of the wire loom so that all of the butt connectors are not in the same place Match harness colors to closest matching car wire colors. All harness wires may not be used. Leave or remove any unused wires in provided harness. Conceal the wire extensions in the 1" wire loom provided.

Place the wires in the slots coming from the brake and accelerator pedals in front of car and drop the rest of the loom under the car. Connect the brake/accelerator wires and re- install the cover to the brake/accelerator area.



**STEP 10:**

Place center Sub Floor (PART #2012) inside the frame. From the inside of the frame, insert two (2) 3/8"x3" grade 8 hex head bolts and two (2) 3/8" flat washers into front holes of the center frame. Insert two (2) 3/8"x2 3/4" grade 8 hex head bolts and two (2) 3/8" flat washers into middle holes of the center frame to hold it in place.

Put the rear snubber angle (PART #2027) inside the center frame and secure it to the frame on both sides at location "F" with two (2) 5/16" x 1" hex head bolts, four (4) 5/16" flat washers and two (2) 5/16" locknuts.

From the inside of the frame, insert two (2) 3/8"x3" grade 8 hex head bolts and two (2) 3/8" flat washers into the remaining front holes of the center frame. Insert two (2) 3/8"x3" grade 8 hex head bolts and two (2) 3/8" flat washers into the last holes at the rear of the center panel . You should now have four bolts sticking out of each side of the frame.



#2013

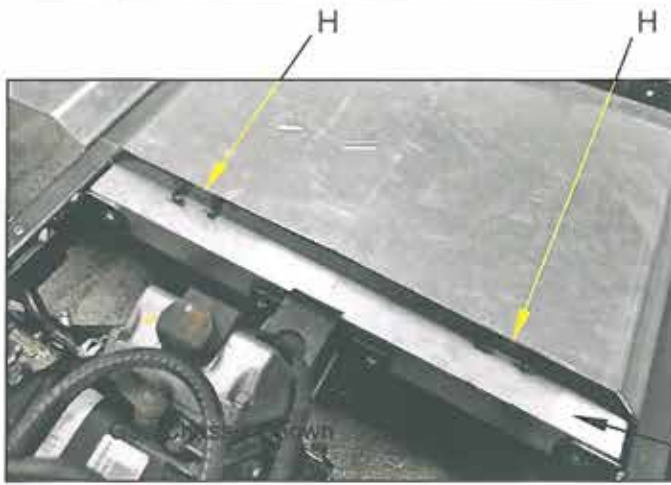
Assemble the left and right side Sub Floor panels, (PART #2013 R&L) to the frame by sliding them over the exposed bolts and securing with eight G8 (8) 3/8" flat washers, eight (8) 3/8" locknuts.

Make sure frame is level and square and **TIGHTEN ALL FRAME BOLTS AT THIS TIME.**

#2013 Middle holes 2 3/4" bolts Rear holes



TITLE:		
<b>RH080RXVBOE INSTALLATION INSTRUCTIONS</b>		
DRAWN BY: R. HAERER	DATE: FEB 02, 2017	OWG NO.
SHEET: 5 of 11	SCALE: Not To Scale	<b># 7669</b>



**STEP 11:**

Replace rear body support bracket at location "H" using two (2)  $\frac{5}{16}$ " x  $1\frac{1}{2}$ " hex head bolts, four (4)  $\frac{5}{16}$ " flat washers and two (2)  $\frac{5}{16}$ " locknuts.

Remove from jack stands and jacks.

Rear body support bracket



**STEP 12:**

Re-assemble the battery box and the two plastic floor pieces to the rear chassis of the car. Drill four (4)  $1\frac{1}{32}$ " holes using battery box and floor pieces as guides. Secure using four (4)  $\frac{5}{16}$ " x  $1\frac{1}{2}$ " Hex Head Bolts, eight (8)  $\frac{5}{16}$ " Flat washers and four (4)  $\frac{5}{16}$ " Lock nuts.

Rear floor panel

**STEP 13:**

On the rear electric motor, unplug and remove the motor brake off the end of the motor. Install Heavy Duty Electric Motor Brake (Part#630894) using factory bolts, plug new motor brake in.

Re-install the batteries.



**STEP 14:**

Run wires down Channel now created on drivers side frame rail to rear of car. Re- install the controller. Re- connect the wire harness to the various connections in the rear of the car.

Re-connect the batteries using connectors removed earlier.

**Do Not make Final connection providing power to Car!**



TITLE:		
<b>RH080RXVBOE INSTALLATION INSTRUCTIONS</b>		
DRAWN BY: R. HAERER	DATE: FEB 02, 2017	DWG NO. # 7669
SHEET: 6 of 11	SCALE: Not To Scale	

**STEP 15:**

Lay the smooth aluminum floor (PART #2014) over the middle frame extension. The tabs on the front rubber mat should be on top of the aluminum floor. (Floor is universal for Gas or Electric cars, holes go to front of car.)

Re-connect charger plug in.

Check and secure any remaining cables.



Charger plug in

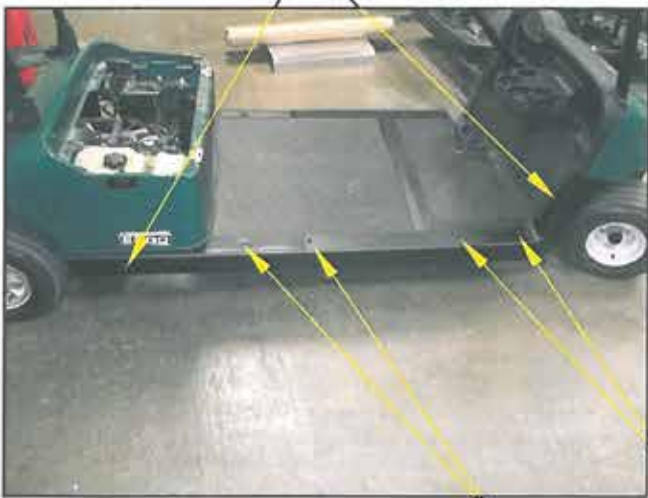
**STEP 16:**

Place the rear body back onto the car using OEM fasteners.

Lay the middle floor mat (Part #2573) down on top of the floor.

Slip edge under rear body and under front floor mat.

Secure the rear body down using all the OEM locations & bolts removed in Step 1.



JJ

**STEP 17:**

Replace the front and rear side trim sections onto the car. Hold the side sections in place using OEM tork bolts at Location "I".

**STEP 18:**

Place new side trim sections over top of the front and rear side trim sections on the car. Line up the front 2 holes in new trim with the 2 top holes in the cars front floor. Secure the new section and front trim section at Location "J" with OEM front trim bolts. At the remaining holes in both new side trim and rear OEM side trim drill 4-1/8" pilot holes using trim as guide Location "JJ" secure at Location "JJ" with 4-7/4"x1 1/4" PPH Sheet Metal Screws (ACG) & 4-1/4" flat washers.

TITLE:		
<b>RH080RXVBOE INSTALLATION INSTRUCTIONS</b>		
DRAWN BY:	DATE:	DWG NO.
R. HAERER	FEB 02, 2017	<b># 7669</b>
SHEET:	SCALE:	
7 of 11	Not To Scale	





**STEP 19:**

Place Floor Mat Threshold #7998 over the seam where the cars 2 floor mats meet. Center Threshold between the new side trim sections and drill  $3\frac{1}{8}$ " pilot holes through Aluminum flooring using holes in the threshold as a guide. Secure threshold to flooring @ all Locations using  $6\frac{1}{4}$ "x $1\frac{1}{4}$ " PPH Sheet Metal Screws (ACG) &  $6\frac{1}{4}$ " flat washers.

**STEP 20:**

Remove Hip restraints from new RXV front seat bottom, (Not provided in Kit) Save all bolts .



**STEP 21:**

Bolt together the middle pod. Secure Seat Hat Rack #7983 to each seat support post #7993 at Location "H" Using:  $4\frac{5}{16}$ "x $1\frac{3}{4}$ " Truss head bolts,  $4\frac{5}{16}$ " Locknuts.



**STEP 22:**

With large holes pointing to the outside attach the seat back bracket #8001 to each side post. Counter sunk hole goes in line with top hole on each seat post. Use  $4\frac{1}{4}$ "x $1\frac{3}{4}$ " PPH (ACG) bolts, do not secure.

**STEP 23:**

On the back side of support posts place the grab handle (PART#7986) onto the back side of the  $\frac{1}{4}$ " PPH (ACG) bolts and secure in place using  $4\frac{1}{4}$ " (ACG) flat washers, &  $4\frac{1}{4}$ " (ACG) locknuts.

TITLE:		
<b>RH080RXVBOE INSTALLATION INSTRUCTIONS</b>		
DRAWN BY:	DATE:	DWG NO.
R. HAERER	FEB 02, 2017	<b># 7669</b>
SHEET:	SCALE:	
8 of 11	Not To Scale	







**STEP 24:**

Place new RXV seat back (Not provided) onto the outer holes of seat back bracket (PART#8001) Secure seat back in place using 4 of the OEM bolts removed from seat bottom in Step 25.



**STEP 25:**

Place new POD assembly onto car with front edge of POD floor mounts approximately 27" from front of rear body center POD on flooring. Drill 4- $1\frac{1}{32}$ " holes through floor using POD floor mounts as guide. Place sub floor supports under center sub floor and bolt POD in place through mounts, floor, and supports using: 4- $5\frac{5}{16}$ "x $1\frac{1}{2}$ " (Grade 8) hex head bolts, 8- $5\frac{5}{16}$ " (Grade 8) flat washers, and 4- $5\frac{5}{16}$ " locknuts. Sub floor supports #7885.

**STEP 26:**

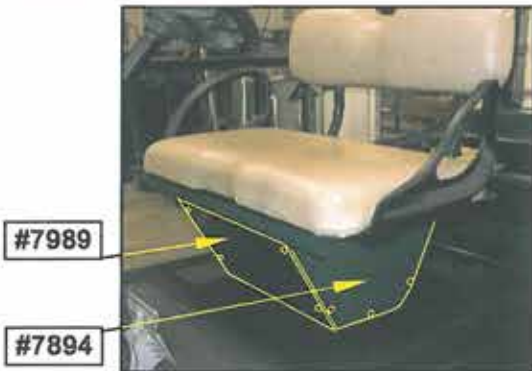
Place front POD cover (PART#7989) against the front of the side support posts (PART#7993) drill 4- $\frac{1}{8}$ " holes in posts using cover as a guide. Secure POD cover in place Using: 4- $\frac{1}{4}$ "x $1\frac{1}{4}$ " PPH sheet metal screws (ACG), 4- $\frac{1}{4}$ " flat washers.

**STEP 27:**

Place the pod side covers (Part#7894), up against the outside of the seat support post (Part #7993). Drill (5)-  $\frac{1}{8}$ " holes into the tube of the seat support post using the holes in the pod side covers as guides. Secure the side cover to the pod with: (10)-  $\frac{1}{4}$ " x  $1\frac{1}{4}$ " Pan Head Sheet Metal Screws, (10)-  $\frac{1}{4}$ " flatwashers.

**STEP 28:**

Place new RXV seat bottom onto Seat Hat Rack with restraints on bottom side of frame bolt through restraints and frame into seat bottom, Using: 8- 10mm x 40mm x 1.5 Hex Head Bolts, 8-  $\frac{3}{8}$ " Lock Washers.



**STEP 29:**

Make final battery connection.

Re-install the basket assembly OR install your new M&M rear seat kit or box to the car.

Re-install the factory rear seat bottom and rear seat back to the car.



TITLE:		
<b>RH080RXVBOE INSTALLATION INSTRUCTIONS</b>		
DRAWN BY:	DATE:	DWG NO.
R. HAERER	FEB 02, 2017	<b># 7669</b>
SHEET:	SCALE:	
9 of 11	Not To Scale	

# REDHAWK

## 4-PASSENGER STRETCH BOLT-ON

### Part# RH080RXVBOE

### Electric - E-Z-GO - RXV

#### BOLT KIT

##### Grade 8

- 4-  $\frac{3}{8}$ "x 4" HEX HEAD BOLTS - Grade 8
- 6-  $\frac{3}{8}$ "x 3" HEX HEAD BOLTS - Grade 8
- 6-  $\frac{3}{8}$ "x  $2\frac{3}{4}$ " HEX HEAD BOLTS - Grade 8
- 32-  $\frac{3}{8}$ " FLAT WASHERS - Grade 8
- 16-  $\frac{3}{8}$ " LOCKNUTS - Grade 8
- 4-  $\frac{5}{16}$ "x  $1\frac{1}{2}$ " HEX HEAD BOLTS - Grade 8
- 8-  $\frac{5}{16}$ " FLAT WASHERS - Grade 8
- 4-  $\frac{5}{16}$ " LOCKNUTS - Grade 8

##### SS/ZINK

- 6-  $\frac{5}{16}$ "x  $1\frac{1}{2}$ " HEX HEAD BOLTS -SS
- 2-  $\frac{5}{16}$ "x 1" HEX HEAD BOLTS -SS
- 16-  $\frac{5}{16}$ " FLAT WASHERS -SS
- 8-  $\frac{5}{16}$ " LOCKNUTS -SS
- 8- 10mm x 40mm x 1.5 HEX HEAD BOLTS -SS
- 8-  $\frac{3}{8}$ " LOCK WASHERS -SS

##### ACG

- 4-  $\frac{5}{16}$ "x  $1\frac{3}{4}$ " TRUSS HEAD BOLTS -ACG
- 4-  $\frac{5}{16}$ " LOCKNUTS -ACG
- 4-  $\frac{1}{4}$ "x  $1\frac{3}{4}$ " PPH BOLTS
- 24-  $\frac{1}{4}$ "x  $1\frac{1}{4}$ " PPH SHEET METAL SCREWS
- 28-  $\frac{1}{4}$ " FLAT WASHERS -ACG
- 4-  $\frac{1}{4}$ " LOCKNUTS -ACG



TITLE:		
RH080RXVBOE INSTALLATION INSTRUCTIONS		
DRAWN BY: R. HAERER	DATE: FEB 02, 2017	DWG NO. # 7669
SHEET: 10 of 11	SCALE: Not To Scale	

# REDHAWK

## 4-PASSENGER STRETCH BOLT-ON

### Part# RH080RXVBOE

### Electric - E-Z-GO - RXV

#### COMPLETE BOX KIT

- 1 - BOLT KIT
- 1 - INSTRUCTIONS
- 1 - WIRE HARNESS KIT (PART #2555)
- 1 - FLOOR MAT (PART #2573)
- 2 - R&L STEEL FRAME (PART #2022)
- 1 - MID SUB FLOOR (PART #2012)
- 2 - OUTER SUB FLOORS (PART #2013) (R&L)
- 2 - SIDE TRIM R&L (PART #2586)
- 1 - ALUMINUM FLOOR SKIN (PART #2014)
- 1 - ALUMINUM SNUBBER ANGLE (PART #2027)
- 1 - HEAVY DUTY ELECTRIC MOTOR BRAKE (PART#630894)
- 1 - THRESHOLD (PART #7998)
- 1 - SEAT HAT RACK (PART #7983)
- 2 - SEAT SUPPORT POSTS (PART #7993)
- 2 - SEAT BACK BRACKETS (PART #8001)
- 1 - GRAB HANDLE (PART #7986)
- 2 - SUB FLOOR SUPPORTS (PART #7885)
- 1 - ELECTRIC FRONT FACE PLATE #7989)
- 2 - SIDE COVERS (PART #7994)



TITLE:		
<b>RH080RXVBOE INSTALLATION INSTRUCTIONS</b>		
DRAWN BY:	DATE:	DWG NO.
R. HAERER	FEB 02, 2017	<b># 7669</b>
SHEET:	SCALE:	
11 of 11	Not To Scale	



